

PLEASE CHECK WWW.MOLEX.COM FOR LATEST PART INFORMATION

Part Number: [0194300004](#)
Status: **Active**
Description: See and Splice™ 5 Circuit Push-in Wire Connector for 12-22 AWG Wire

Documents:

[Drawing \(PDF\)](#) [RoHS Certificate of Compliance \(PDF\)](#)

Agency Certification

UL E32244

General

Product Family Splices
 Series [19430](#)
 Comments Gray Insert|1000V max. for lighting/sign fixtures
 Crimp Quality Equipment Yes
 Mil-Spec N/A
 Product Name See and Splice™

Physical

Barrel Type Closed
 Flammability 94V-2
 Insulation None
 Packaging Type Bag
 Temperature Range - Operating -30°C to +105°C
 Wire Insulation Diameter .130" this is the nominal O.D.
 Wire Size AWG 12, 14, 16, 18, 20, 22
 Wire Size mm² 0.25 - 2.70

Electrical

Voltage - Maximum 600V

Material Info

Reference - Drawing Numbers

Sales Drawing SD-19430-001

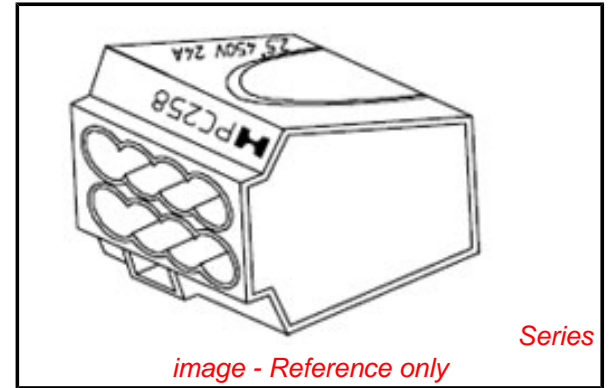


image - Reference only

EU RoHS

**ELV and RoHS
Compliant**

REACH SVHC

Not Reviewed

Halogen-Free

Status

Not Reviewed

China RoHS



**Need more information on product
environmental compliance?**

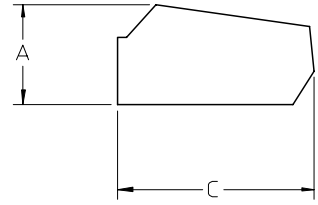
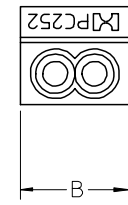
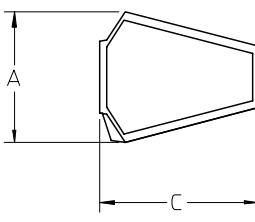
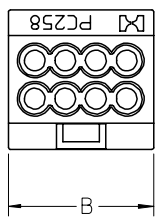
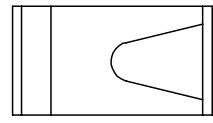
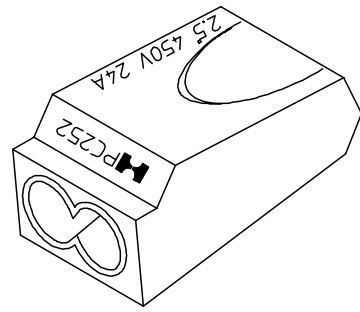
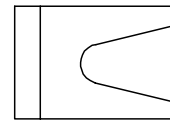
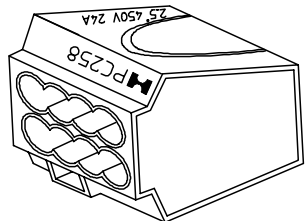
Email productcompliance@molex.com
 For a multiple part number RoHS Certificate of
 Compliance, [click here](#)

Please visit the [Contact Us](#) section for any
 non-product compliance questions.

Search Parts in this Series

[19430Series](#)

MATERIAL NUMBER	ENGINEERING NUMBER	COLOR INSERT	SOLID WIRE RANGE AWG	PORTS	DIM A	DIM B	DIM C
194300001	19430-0001	RED	12-22	2	.37/9.5	.41/10.5	.77/19.5
194300002	19430-0002	ORANGE	12-22	3	.37/9.5	.53/13.5	.78/19.7
194300003	19430-0003	YELLOW	12-22	4	.37/9.5	.68/17.2	.78/19.7
194300004	19430-0004	GRAY	12-22	5	.37/9.5	.83/21.1	.78/19.7
194300005	19430-0005	BLACK	12-22	8	.66/16.8	.69/17.5	.75/19.0



PORTS 8

PORTS 2,3,4,5

REF NOTES:

- 1.) CURRENT: 24A(VDE)
- 2.) VOLTAGE: UL-600V, VDE-450V
- 3.) WORKING TEMP: -30°C TO 105°C
- 4.) HOUSING MATERIAL: UL 94V-2 FLAME RETARDANT THERMOPLASTIC
- 5.) WIRE STRIP LENGTH: APPROX. .45/11.0
- 6.) UL FILE NO. PENDING.
- 7.) INTERNATIONAL APPROVALS: CE, VDE, FIMKO, KEMA, CEBEC

EC NO: ETC2005-0065 DRWN: JLOMASTR2004/09/28 CHKD: 2004/09/28 APPR: RDEROSS 2004/09/28	QUALITY SYMBOLS ▽ = 0 ▽ = 0	GENERAL TOLERANCES (UNLESS SPECIFIED)		SCALE 1:1	DESIGN UNITS INCH	THIRD ANGLE PROJECTION	REVISE ON CAD ONLY
			mm	INCH	DIMENSION STYLE IN/MM		TITLE
		4 PLACES	± ---	± ---	DRAWN BY B.RUPERT	DATE 11/13/03	PUSH-IN WIRE CONNECTOR 12-22AWG
		3 PLACES	± ---	± ---	CHECKED BY J.PAWLIC	DATE 11/13/03	
2 PLACES	± ---	± .020	ANGULAR ± 1 °		MATERIAL NO. SEE CHART		
1 PLACE	± 0.51	± ---	DRAFT WHERE APPLICABLE		DOCUMENT NO. SD-19430-001	SHEET NO. 1 OF 1	
MUST REMAIN WITHIN DIMENSIONS		THIS DRAWING CONTAINS INFORMATION THAT IS PROPRIETARY TO MOLEX INCORPORATED AND SHOULD NOT BE USED WITHOUT WRITTEN PERMISSION					